

August 2024

Central Texas Riders

www.centexriders.org



Chapter Directors' Notes

Hello Central Texas Riders,

We had a fun breakfast ride to Miller's Smokehouse in Belton on 10 August. Yes, a BBQ joint for breakfast, and it was great! Jim and Alvalin lead us on an hour of twisties on the way. And folks visited the farmers market and the Cochran Blair Potts department store before returning. Jeff and Shari, Chet, Steven Thomas (Ch O) and I rode, and Jim and Dee Dee Evans (Ch O) met us at the restaurant.

Jim and Alvalin and I met Capitol Wings (Ch O) for their monthly meeting at the Junction Café in Bertram on 17 August. Old and new friends, bikes, and great food. Life is good!

Inside this issue

Page 1	Greetings
Page 2	Fun Stuff
Page 3-5	Roby's Ramblings
Page 6	Events
Page 7	Links and Info
Page 8 - 10	Flyers & Forms

Nobody on a motorcycle
ever said
"Are We There yet?"

BIRTHDAYS

25 Aug Jeannie K
17 Sep Young B
24 Sep Chet R
27 Sep Erik W

ANNIVERSARIES

None

The Texas District Fall Ride-In is coming up soon, 26 - 28 September. It is in Lindale, north of Tyler. Flyer and registration info is included in this newsletter. As of the 17th there were 55 folks registered. We are planning to ride up on the 25th, and return on the 29th.

Planning is under way for a Texas District Spring Ride-In, 20 - 23 Mar 2025, at the Y.O. Hotel in Kerrville. Would anyone be interested in a follow on ride to Big Bend, 23 - 27 Mar?

Some sad news: The Chapter Directors of Chapter S2 in League City (between Houston and Galveston) are Scott and Debbie Newman. Debbie has been diagnosed with cancer, and we will keep them in our prayers. They are standing down, and efforts to find a replacement Director have been unsuccessful.

Next Chapter Meeting
September 24
Golden Corral

Ride Often/Ride Safe
Gene & Quinta

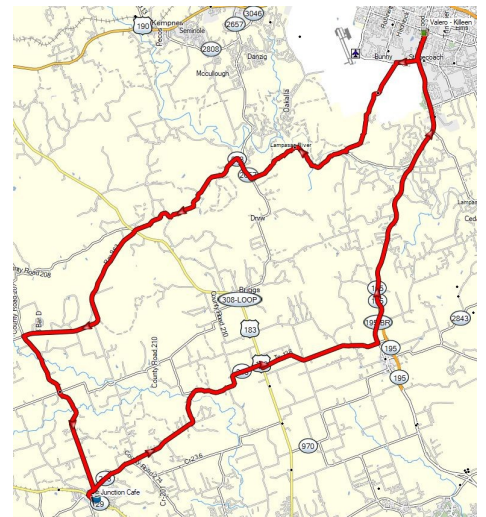
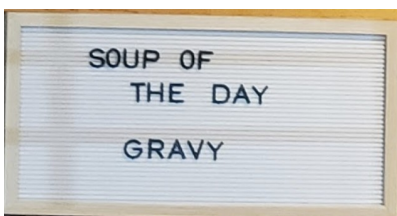


Breakfast Ride to Miller's Smokehouse in Belton, Aug 10. Jim and Alvalin lead a great back roads morning ride, and the breakfast menu at Miller's was excellent! Chapter T was joined by Jim and Dee Dee Evans, and Steven Thomas from Chapter O.

Chet "Manny Pearl" got some new boots from Cochran Blair Potts before we left.



Chapter O had a Breakfast Ride and their monthly gathering at Junction Café in Bertram, Aug 17. Jim and Alvalin and Gene met them there. We enjoyed the camaraderie, discussed the upcoming Texas District Fall Ride-In (Lindale TX 24 -26 Sep), and had some great Texas food. The Hobo Hash was delicious. While there, many of the Chapter O members and visitors joined our Central Texas Riders Group-Spot to share information and communications.



Roby's Ramblings

By: Chet Roby

NOTE: The following article is a reprint from an article I wrote in August of 2007. Some adjustments have been made to the original content that were pertinent at the time the article was originally written.



Texas' summer weather has finally become reality and the importance of understanding the impact on our body and the machines (motorcycles) is critical in preparation for the day's activities.

This past weekend I had the pleasure of enjoying 100+ heat on the Basic Rider Course, at Killeen's Viva La Arts facility. Prior to reaching the course I planned a scheduled stop at Wal-Mart and purchased a 12-pack of Propel Fitness Water; a planned second stop was also made at a near by convenience store, in which ice was add to the cooler. I am now ready for a weekend of training preparation.

Tips for starting your weekend activity may differ, but here are some things to consider as pre-ride preparation.

Tips for Riders and Co-Riders:

Ensure you carry and drink plenty of water or hydrating liquids. The focus should be on liquid elimination every few hours, thus assuring adequate liquid consumption.

Avoid caffeinated drinks (diuretics), such as coffee and colas, which hasten water loss. Remember, if you mouth is dry, you're already dehydrated.

Wear vented, full-coverage clothing, as exposed skin wicks away vital moisture.

When and if possible, use evaporative cooling, such as damp collars, clothing, spray bottles, etc. There are several good products on the market that can be worn to assist in cooling down the body's core. (I.E. Joe Rocket has a Sahara Evaporative Cooling vest that works very well; there is a Bandanna that contains absorbent material and raps around one's neck. After being soaked in cold water for 5 to 30 minutes, the beads swell, and the comfort of the cool bandanna around the neck, covering the main arteries leading to the brain, are instantly cooled.)

Be sure and wear light, reflective colors.

If possible, time your riding to avoid the hottest hours. (Some riders can tolerate heat better than others, thus ensuing the group's consensus on riding hours is critical.

Be sure to enter air-conditioned spaces to cool yourself during breaks.

Wear a well ventilated helmet. (Note: Tall windshields prevent air flow; therefore a vented helmet will perform no better than a non-vented helmet.)

Increase air flow to both the rider and passenger through Air Wings and windshield vents. (If one chooses a tall windshield consider adding a vent.)

When possible, ride back roads, as agricultural areas tend to have more shade.

Tips for Your Machine:

Be sure your bike's coolant is supportive of the owner's manual specifications.

Make sure all liquids and filters are ready for extreme temperatures. Again, check with the owner's manual or your local repair shop to ensure the correct oil viscosity for high speed touring in higher temperatures.

Be sure your battery is fully charged and the charging system is fully functional, as high temperatures actually cause a battery to discharge more rapidly than moderate temperatures.

Give serious consideration to replacing worn or marginal tires before beginning a long tour. Tires wear faster when pavement is scorching, and you lose more critical tread faster at the end of a tire's life than at its beginning.

Note: Remember the tire picture from July 2024's article.

Always check tire pressures daily before riding. Internal tire pressures can increase 20 percent when hot, so accurate reading must be taken when tires are cold. Running tires under inflated can lead to premature failure, which can be catastrophic.

Be sure windshields and helmet visors are free from defects. Replacing scratched or gouged windshields and helmet visors should be considered, as scratches or hazed plastic can add to fatigue, especially when you're already stressed by heat.

Drink holders are also noted as a consideration for the Rider and Co-Rider, which can safely be used while underway. Water reservoirs, such as the Camelback brand, can also a consideration for maintaining hydration.

Carry plenty of cold liquids (some with electrolytes) to keep the body's core temperature down.

Adjust your suspension properly if hauling a cooler full of ice and drinks. If the cooler rides on the tongue of a trailer, include its filled weight when you measure tongue weight.

Be sure and load liquids low. A pint of water weighs one pound, thus strapping a couple of gallons above the bike's center of gravity can make it top-heavy by 16 pounds and make maneuvering unpredictable.

Tips for the Hot Summer Riding Environments:

Paving sealants (tar snakes) become very slippery when hot. Automobile coolant spills (many times at intersections), steel paving plates, freshly painted road markings, and other pavement hazards are more obvious and in abundance during the summer.

A highway construction creates highly unpredictable conditions, so slow down.

Insects are another hazard that can create havoc for the bike's windshield. Take the time to clean your windshield with soft terry cloth and lots of water, on a regular basis, being sure to include your visor or safety glasses.

Critters and/or "road kill" are obstacles that need to be every motorcyclist's focus. Maneuvering around the obstacle is the operative approach, but if this is not possible and impact is inevitable, be sure to hit the animal squarely, as it may be slippery.

Be aware of one's surrounding. If you are in a vacation area or a recreational area with families and children, again look for the unexpected. Have the "rider radar" continuously SEEing. (Searching...Evaluating...Executing).

Passenger cars and trucks are generally air-conditioned, with motorists insulated inside closed windows. Often the air conditioner's fan, coupled with cell phone distractions, and music, ensures a driver's awareness of your presence may be marginal, at best.

Sunburns are uncomfortable and it's an invitation to skin cancer. Use sun block (30 SPF or higher is recommended) on all exposed skin.

In low humidity environments use evaporative cooling techniques, which was previously noted in the first section (**Tips for Riders and Co-Riders, point #4**).

Know the danger signs of dehydration, heat exhaustion, and heat stroke. Recognize them in yourself and watch for symptoms appearing in your Co-Rider and fellow riders, if any.

Know the differences between the treatments for hydration, heat exhaustion, and heat stroke.

Dehydration: Your body is losing water and salts faster than you are replenishing them.

Symptoms: Thirst, flushed face, dry and warm skin, dizziness, weakness, cramping extremities, headache, and dry mouth.

Treatment: Stop riding and seek shade or air-conditioning. Drink additional water or specialized sports drinks with body salts. Note: Persons with heart problems or those on a low sodium diets must be cautious about the intake of sport drinks. Always dilute them 50/50 with water. Rest until you feel restored and consider adjusting your planned distance accordingly.

Heat Exhaustion: This is caused by the loss of large amounts of fluid through sweating, sometimes with excessive loss of salt. Your body can no longer dissipate heat adequately.

NOTE: HEAT EXHAUSTION CAN PREGRESS TO HEAT STROKE QUICKLY.

Symptoms: Sweating, clammy and moist skin, pale or flushed complexion, extreme weakness or fatigue, giddiness, nausea, or headache, irritability. When extreme, vomiting or loss of consciousness can occur. Body temperature is normal or slightly elevated.

Treatment: Call EMS (911). Apply all treatments as for dehydration, including restoration of body salts with sport drinks. (Be sure to following the precautionary information for persons with heart problems or low sodium diets.)

Heat Stroke: the most serious of heat-related health problems is heat stroke and occurs when the body's temperature regulatory system fails and sweating becomes inadequate. There is little warning to the victim that a crisis stage has been reached. the body can no longer dissipate heat at all, and severe organ damage may occur if not treated immediately, including death.

Treatment: Call EMS (911) immediately, as this is a medical emergency. Unless the victim receives quick and appropriate treatment, death can occur. Any person with signs or symptoms of heat stroke requires immediate hospitalization and first aid should be immediately administered. Reducing patient's body heat immediately by all means possible is imperative. This includes removing the victim to a cool area, thoroughly soaking the clothing with water, and vigorously fanning the body to increase cooling. Further treatment at a medical facility should be directed to the continuation of the cooling process and the monitoring of complications that often accompany the heat stroke. Early recognition and treatment of heat stroke are the only means of preventing permanent brain damage or death.

Safe riding as you keep both wheels on the ground and the body well hydrated.

Kindest personal regards,

R. Chester Roby

EWMA Number 1093

Former GWRRR Number 174559

Former Life Grand Master Number 6226





Central Texas Riders (Chapter T)

Rides/Events

<i>CenTex Riders Gathering</i>	<i>27 Aug 2024</i>	<i>Golden Corral - Killeen</i>
<i>EWMA Rendezvous</i>	<i>29 - 31 Aug 2024</i>	<i>Green Bay, WI</i>
<i>Michigan District Ride-In</i>	<i>10 - 14 Sep 2024</i>	
<i>CenTex Riders 2nd Saturday Ride</i>	<i>14 Sep 2024</i>	<i>Black Rifle Coffee - Harker H.</i>
<i>North Carolina District Rally</i>	<i>20 - 21 Sep 2024</i>	<i>Brown Summit, NC</i>
<i>CenTex Riders Gathering</i>	<i>24 Sep 2024</i>	<i>Golden Corral - Killeen</i>
<i>Texas District Fall Ride-In</i>	<i>26 - 28 Sep 2024</i>	<i>Lindale, TX</i>
<i>National Motorcycle Ride Day</i>	<i>12 Oct 2024</i>	
<i>CenTex Riders 2nd Saturday Ride</i>	<i>12 Oct 2024</i>	<i>Alfredo's Mexican Lampassas</i>
<i>Mississippi District Rally</i>	<i>24 - 26 Oct 2024</i>	<i>Biloxi, MS</i>
<i>CenTex Riders Gathering</i>	<i>22 Oct 2024</i>	<i>Golden Corral - Killeen</i>
<i>CenTex Riders 2nd Saturday Ride</i>	<i>9 Nov 2024</i>	<i>Water St Waffles—Belton</i>
<i>CenTex Riders Gathering</i>	<i>26 Nov 2024</i>	<i>Golden Corral - Killeen</i>
<i>CenTex Riders Holiday Party</i>	<i>6 Dec 2024</i>	<i>TBA</i>
<i>CenTex Riders Polar Bear Ride</i>	<i>1 Jan 2025</i>	<i>Dead Fish Grill—Belton</i>
<i>CenTex Riders 2nd Saturday Ride</i>	<i>11 Jan 2025</i>	<i>TBA</i>
<i>CenTex Riders Gathering</i>	<i>28 Jan 2025</i>	<i>Golden Corral - Killeen</i>
<i>CenTex Riders 2nd Saturday Ride</i>	<i>8 Feb 2025</i>	<i>TBA</i>
<i>CenTex Riders Gathering</i>	<i>25 Feb 2025</i>	<i>Golden Corral - Killeen</i>
<i>CenTex Riders 2nd Saturday Ride</i>	<i>8 Mar 2025</i>	<i>TBA</i>
<i>Florida District Rally</i>	<i>13 -15 Mar 2025</i>	<i>Gainesville, FL</i>
<i>Texas District Spring Ride-In</i>	<i>20 - 23 Mar 2025</i>	<i>Kerrville (tentative)</i>
<i>CenTex Riders Gathering</i>	<i>25 Mar 2025</i>	<i>Golden Corral - Killeen</i>

EAGLE WINGS MOTORCYCLE ASSOCIATION



Central Texas Riders (Chapter T)

Eagle Wings Motorcycle Association References and Links

EWMA National Website: <https://www.EWMA-World.org>

EWMA National Facebook: <https://www.facebook.com/groups/eagle.wings.motorcycle.association>

Region B Website:

Region B Facebook: <https://www.facebook.com/groups/648709793287460>

Texas District Website: <https://www.gwrra-tx.org/>

Texas District Facebook: <https://www.facebook.com/groups/736753967150486>

CenTex Riders Website: <https://www.CenTexRiders.org>



Chapter Team:

Directors: Gene & Quinta Harris

Treasurers: Tim & Young Brooks

Ride Coordinators: Jim and Alvalin Woodul

Safety/Rider Education: Chet Roby

Webmaster/Newsletter: Gene & Quinta Harris

Support Our Sponsors — They Support Us!

Computer Solutions

For your complete computer needs, both hardware and software, contact Dan at (254) 680-2983.

4610 Teal Drive

Killeen, TX 76542-3783



TEXAS DISTRICT 2024 FALL RIDE-IN



EWMA-TX.org

Lindale, TX

September 26, 27 and 28 2024

Come Join us for 3 great days of both lead and self-lead rides through the scenic North East Texas roads and cities with lots of great food along the way. Plus, fun evenings getting together with friends.

Host Hotel

Comfort Suites

200 W. Centennial Blvd.

Lindale, TX 75771

903-882-8318

For group rates, you must contact the hotel by phone and say you are with:

Eagle Wings Motorcycle Association

See next page for more Information

Electronic Registration

<https://form.jotform.com/241784237076159>

Texas District 2024 Fall Ride-In, Sep 26-28 2024, Lindale TX

Registration Cost

Pre-Registration Ends 9/19/2024

EWMA Member PRE-REGISTRATION PER PERSON	\$15
EWMA Member PRE-REGISTRATION COUPLE	\$20
NON EWMA Member PRE-REGISTRATION PER PERSON	\$20
NON EWMA Member PRE-REGISTRATION COUPLE	\$30

Registration at the door

INDIVIDUAL	\$25
COUPLE	\$35

ELECTRONIC REGISTRATION

<https://form.jotform.com/241784237076159>

NIGHTLY EVENTS

Thursday Night: 50/50 Drawing, Announcements, Hot Dogs & Chips @ \$1.00 each collected at the time

Friday Night: 50/50 Drawing, Announcements, Frito Pie @ \$2.00 each collected at the time & District Provides Free Ice Cream

Saturday Night: 50/50 Drawing, Announcements, Pizza Party — all chip in, collected at the time

District will provide bottled water all nights

Hotel Info

Comfort Suites
200 W. Centennial Blvd.
Lindale, TX 75771
903-882-8318

For Group Rates you must contact the hotel by phone and say you are with
Eagle Wings Motorcycle Association

Group Rate

1 King Bed, No Smoking, Suite \$90.00 a Night
2 Queen Beds, No Smoking, Suite \$98.00 a Night

Group Rate Cutoff 9/14/2024

For More Information. Contact One Of The Following:

Dan Rymarz dan.rymarz@outlook.com

Lyle Altes laltes@outlook.com

Jim Evans jdjmevans@sbcglobal.net



EWMA Texas - Membership Drive

EWMA Texas will be drawing Raffle tickets at the Texas Fall Ride-In, Date and location TBD. Grand prize is \$500 and ALL current EWMA Texas members will automatically be eligible to Win!

- **New Members:** Every new Texas member will receive one entry for per person (Limit 2 people) per year you sign up for! Dates: September 1st, 2023 thru September 1st, 2024
- **Existing members:** Anyone Texas member who signed up for more than one year since EWMA was formed will receive one entry for each person (Limit 2 people) for each additional year you signed up for at your original joining!
- **Renewing members:** Any renewal of your EWMA Texas membership will earn you one raffle ticket for EACH member (Limit 2 people) for each year you extend your existing membership.
- **Recruiting a Member:** Any member who brings a NEW Texas membership to EWMA (Family or individual count as One entry) and new memberships can only have one recruiter. Email dan.rymarz@outlook.com with the name of your recruit.
- **The Only Texas members not eligible:** Texas District Directors – Dan and Donna Rymarz
- **Winners must be a member at the time of the drawing**
- **Drawing Date:** This will be taking place at the evening get together during the Texas Fall Ride-In on (TBD). Winner(s) do not need to be present to win.
- **What do I have to do?**
 - Visit - https://ewma-world.org/content.aspx?page_id=60&club_id=719997
 - Sign up or Renew (Existing Multi-Year members are already entered)
 - You are automatically entered! (we get reports)
 - You will get an email as we approach the Fall Ride-in confirming your numbers in the drawing.
 - Need Not Be Present to win.
- **Membership Cost and Raffle entries:**
 - **Individual Membership**
 - 1 Year – \$25 - 1 Raffle Entry
 - 2 Year – \$45 - 2 Raffle Entries
 - 3 Year – \$65 - 3 Raffle Entries
 - **Family Membership**
 - 1 Year – \$30 - 2 Raffle Entries
 - 2 Year – \$55 - 4 Raffle Entries
 - 3 Year – \$80 - 6 Raffle Entries

